

EGSG

N51 39.15 E000 09.37

STAPLEFORD

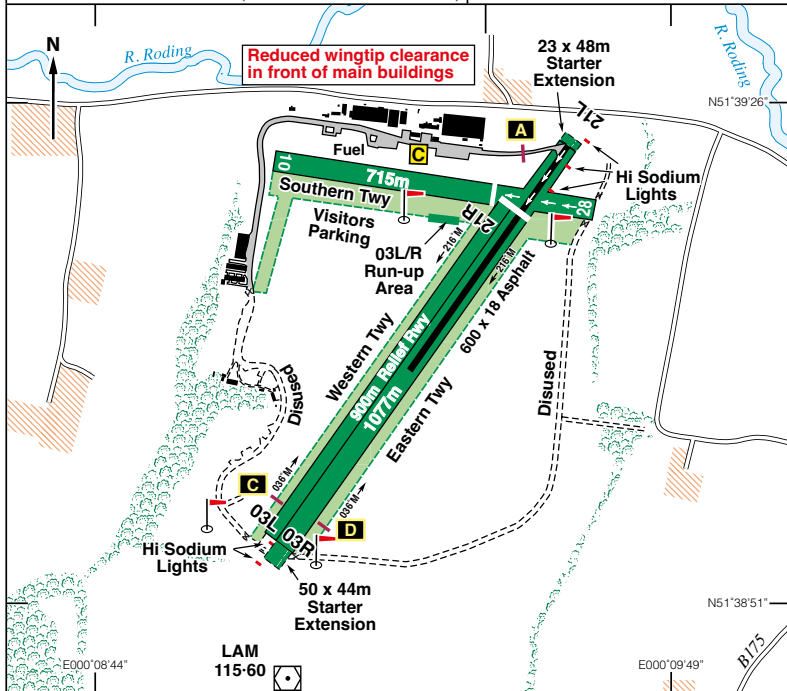
185ft AMSL

4.5 nm N of Romford.

c/s Stapleford Radio 122•805 A/G 0800-1800

Luxaviation Ops 130•625

VOR/DME 'LAM' 115•60 (450 metres S of Thr 03)



Rwy	Dim(m)	Surface	TORA(m)	LDA(m)	Lighting
03R/21L	1077x46	Grass/ *Asphalt	03R-1127† 21L-1100 †	03R-1077 21L-900	Ap Thr Rwy APAPI 4.5° RH Ap Thr Rwy APAPI 4.25° LH
03L/21R	900x30	Grass	03L-900 21R-900	03L-900 21R-900	Nil Nil
10/28	715x46	Grass	Uncicensed		Nil

* Asphalt 600x18m at NE end. Note. 600m asphalt available for take-off, only 400m available for landing due to displaced landing threshold.
 † TORA includes Starter Extensions.

Op hrs: 0830-1800 (SS Winter). Strictly PPR.

Landing Fee: Single £20; Twin & Single Helicopters £36; Twin Helicopter £50.

Customs: 4 hrs PNR Inbound EU. **Hangarage:** Overnight parking £15.

Maintenance: Stapleford Maintenance, Tel: 01708 687110.

continued

N51 39.15 E000 09.37

STAPLEFORD

185ft AMSL

Remarks: Operated by The Herts and Essex Aero Club Ltd., Stapleford Aerodrome, Stapleford, Nr Romford, Essex RM4 1SJ. Managed by Stapleford Flight Centre. Strictly PPR. Outside of published hours of operation, a minimum of 2 hours notice is required.

Night facilities 30 mins PNR before 1600 hrs.

High intensity traffic in circuit up to 2400ft due to extensive training in IMC and VMC.

After landing, clear right Rwy 03L, 10, and 21L; clear left Rwy 03R, 21R and 28.

Aircraft departing using 03L will initially taxi to the 03L/R run-up area for power and pre-take-off checks.

Once completed, aircraft will taxi to cross both runways 03L and 03R, onto the eastern taxiway, giving way to departing and landing aircraft.

Aircraft will then taxi south along the eastern taxiway to Holding Point Delta.

When ready for departure, aircraft will taxi to cross Runway 03R and line up on Runway 03L.

Circuits: Left hand at 1200ft on the QNH for both Rwy 03 & 21.

Noise abatement/circuit procedures – Fixed Wing Aircraft:

Rwy 03 Climbout - Climb **straight ahead** on Rwy track 035°. **At or above** 500ft or overhead the M25 whichever is later, commence a 30° **right** turn to track 065°, **at or above** 800ft or overhead the pylons whichever is later, turn left onto crosswind track 205°. Be aware of North Weald circuit and Stansted TMZ/CTA stub.

Rwy 03 Departure - Depart at the **end of climbout** for north/south/east departures by commencing a **non-standard right hand turn** once **at or above** 1000ft or overhead the pylons, whichever is later. Continue right turn and climb overhead for west departures. Be aware of North Weald circuit and Stansted TMZ/CTA stub.

Join - Standard overhead join at 1800ft, descend dead side 1200ft.

Base/Final Approach - Turn onto base once past the Bank of England, turning overhead Top Golf, track 125°. Turn onto final and aim to use minimum power.

Rwy 21 Climbout - Climb **straight ahead** on Rwy track 215°. **At or above** 500ft, commence a 20° **left** turn to track 195°, **at or above** 800ft turn left onto crosswind track 125°.

Rwy 21 Departure - Depart at the **end of crosswind leg** for north/south/east departures, or a **non-standard right hand turn** once **at or above** 1000ft on climbout for west departures.

Join - Standard overhead join at 1800ft, descend dead side 1200ft.

Final Approach - Be **at or above** 750ft overhead the pylons, be **at or above** 400ft overhead the M25 motorway.

Helicopter Arrival/Departure Routes - see chart overleaf.

Warnings: Do not land short of displaced thresholds on 21L and 21R.

Power cables running NW - SE 210ft aal, 395ft amsl 045°/1 nm.

Facilities include: Executive lounge, catering, transport, flight planning, Met briefing etc.

Restaurant: Refreshments available.

Taxis: 0208 5023333.

Fuel: 100LL. Jet A1 PNR,

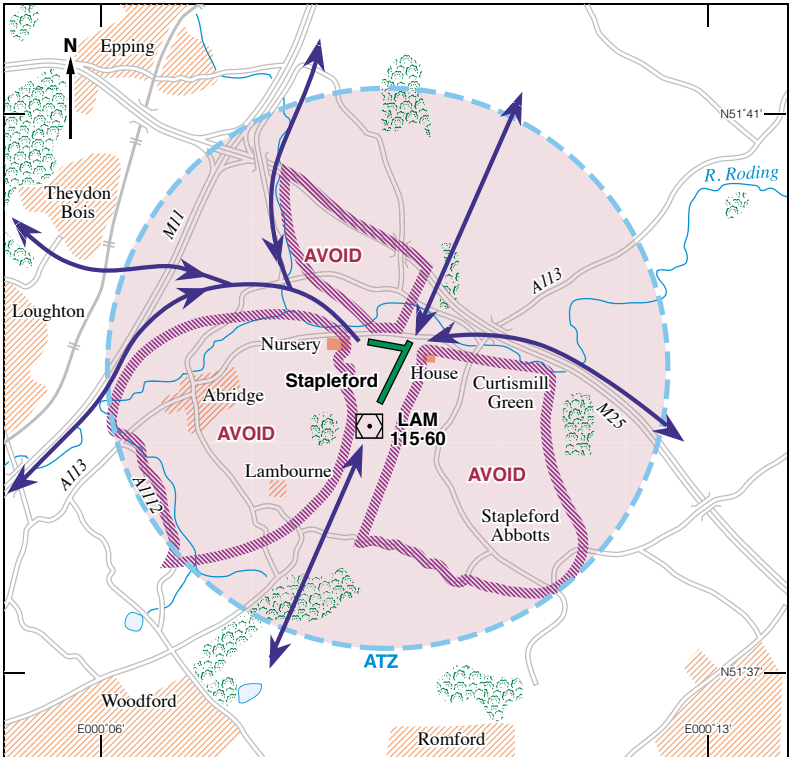
Tel: 01708 688380.

Tel: 01708 688380

Fax: 01708 688421

Website: www.flysfc.com

STAPLEFORD HELICOPTER ARR/DEP ROUTES



Initial contact – Stapleford Radio 122-805.

Helicopter pilots should follow the routes shown above unless required to conform to the Stapleford fixed wing circuit pattern.

Operating height for helicopters within the ATZ is 500ft agl.

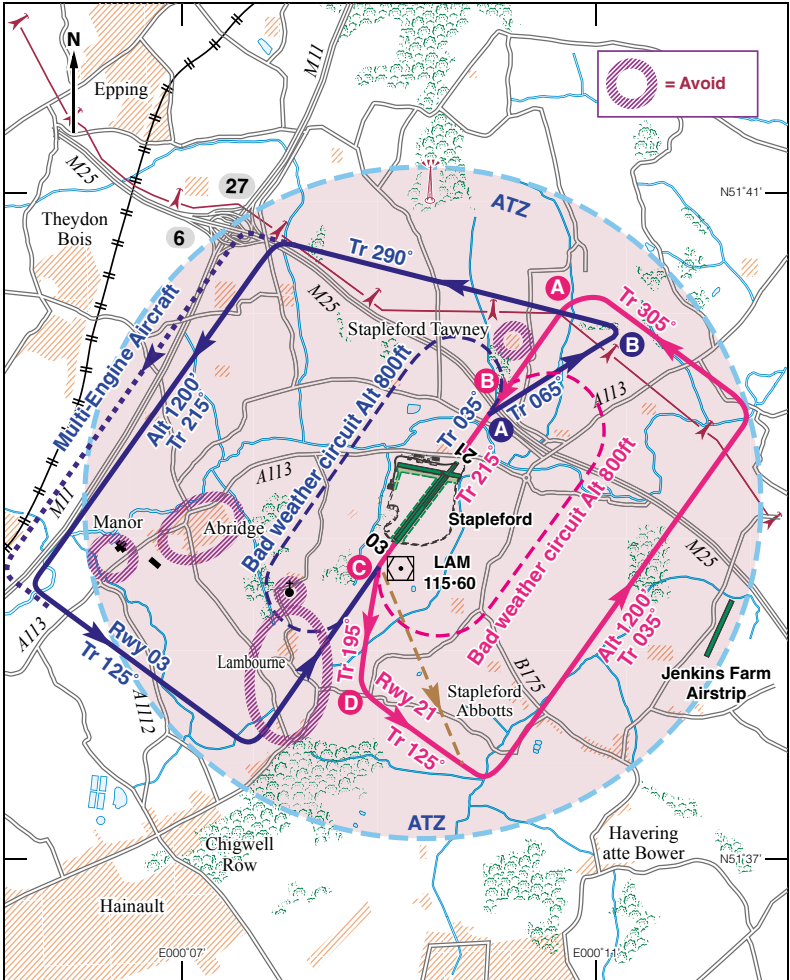
Avoid overflying the shaded areas and the Nursery and House at each end of Rwy 10/28.

Overflight of Abridge, Lambourne, Curtismill Green and Stapleford Abbots is to be avoided at all times.

Helipad - PPR

Jet A1 available on prior notice – Tel: 01708 688380.

STAPLEFORD FIXED WING CIRCUITS



High intensity traffic in circuit up to 2400ft due to extensive training in IMC and VMC. Circuits LH at 1200ft QNH.

- Blue A - 500' or overhead the M25, whichever is later, turn right 30° to track 065°
- Blue B - 1000' or overhead the pylons, whichever is later, turn onto crosswind track 295°.
- Red A - 750' overhead pylons.
- Red B - 400' overhead M25.
- Red C - 500' left turn: Private 20° to track 195°. Commercial: 60° to track 155°.
- Red D - 800' turn onto crosswind.