

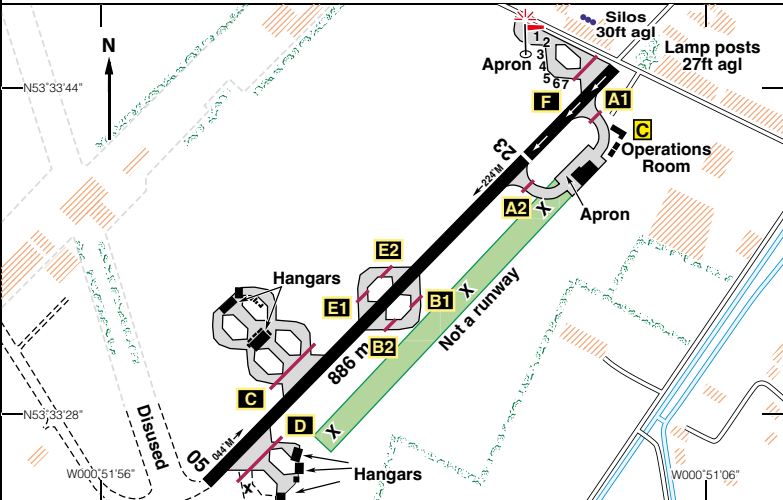
EGCF

N53 33.58 W000 51.50 **SANDTOFT** 13ft AMSL

7 nm SW of Scunthorpe. /// hoped.cleans.indicated **OTR 113-90 256 28-1**

c/s Sandtoft Radio 130.415 A/G

Humberside 119-130 (LARS) 0630-2115. Waddington Zone 119-500 (LARS)
 Mon-Thu 0800-2000, Fri 0800-1800, Sat & Sun 1000-1700



Rwy	Dim(m)	Surface	TORA(m)	LDA(m)	Lighting
05/23	886x18	Asphalt	05-691 23-799(HJ) 23-696(HN)	05-786 23-691(H24)	Nil Thr Rwy APAPI 4°

Op hrs: Winter: 0900-1700. Summer: 0900-1800. **Customs:** 24 hrs PNR.

Landing Fee: Microlights £5, Singles/Gyrocopter/Helicopters £10, Twin/Turbo/Light Jets £20.

Hangarage: Available; tie downs also available. **Maintenance:** Piston & Turbine.

Remarks: Operated by E-Plane Ltd, Sandtoft AD, Belton, Doncaster DN9 1PN. Visiting acft welcome. Non-radio acft PPR. Members AD access: 24/7 days, Non members AD access: Standard ops hours. AD category 1B, **licensed on Saturdays UFN**, for acft length up to 12m and helis up to H2 with RFFS level 1, (Level 2 PPR). Squawk 6170 when approaching and departing Sandtoft if monitoring Doncaster radar. A/D is on the boundary of the Doncaster Sheffield CTR and beneath Class D CTAs. High visibility clothing required, especially when crossing the runway to/from Hold F to Control. Join overhead at 1500ft QFE. Circuits at 1000ft QFE, LH on 05, RH on 23. Transponder equipped aircraft to squawk the VFR aerodrome traffic pattern code 7010 in accordance with UK AIP ENR 1.6 ATS SSR and Procedures. Avoid overflying the village of Belton on the East perimeter of A/D.

Caution: Rwy 23 threshold displaced due to lamp standards and Silos in the approach area.

Fuel: 100LL.

Tel: 01427 872034. **Email:** info@yorkshireaeroclub.uk
Website: https://www.yac.uk/sandtoft-airfield/